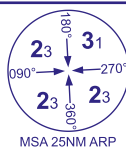


INSTRUMENT APPROACH CHART - ICAO

BARRA
RNP
RWY 15
(ACFT CAT A,B)



AFIS 118.080

BARRA INFORMATION

AD ELEVATION

5

THR ELEVATION

4

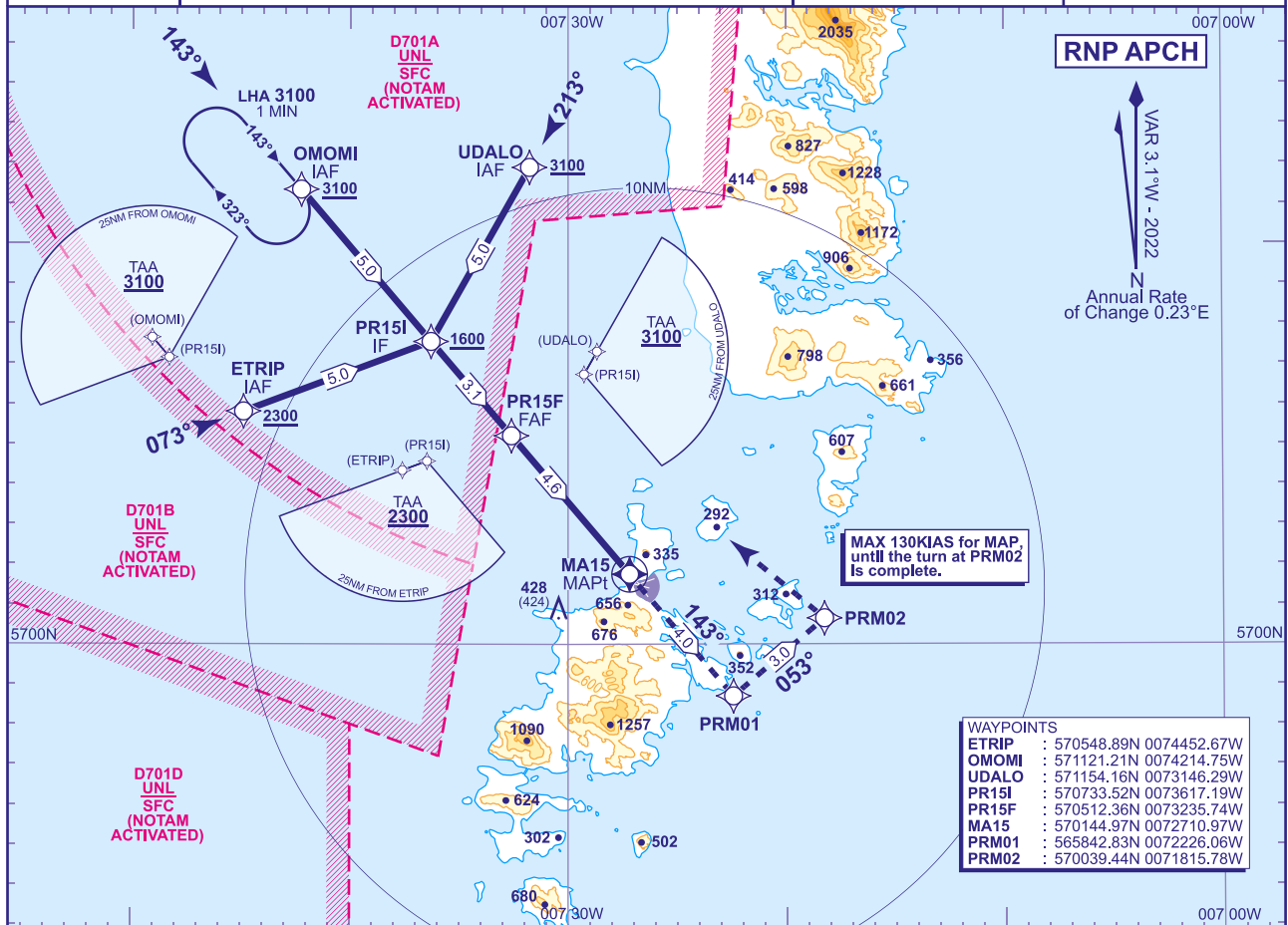
OBSTACLE ELEVATION

428 AMSL
(424) (ABOVE THR)

BEARINGS ARE MAGNETIC

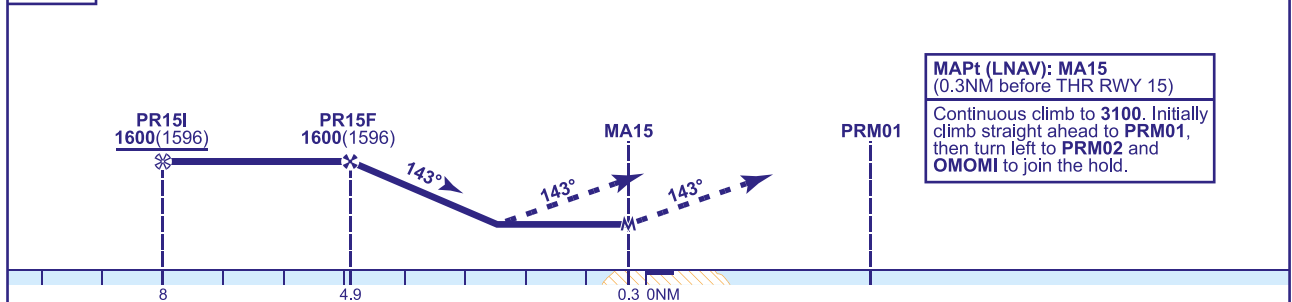
TRANSITION ALTITUDE

3000



RECOMMENDED PROFILE Gradient 5.24%, 320FT/NM

NM to MA15	4	3
ALT(HGT)	1410(1406)	1090(1086)
TCH 40		



Aircraft Category		A	B	Rate of descent					
OCA (OCH)	LNAV	800(796)	800(796)	G/S KT	160	140	120	100	80
				FT/MIN	850	740	640	530	420
VM(C)OCA (OCH AAL)		Not Authorised							
Total Area	North of RWYs 250°M clockwise to 160°M	810(805)	810(805)						

NOTE

- High ground lies in the vicinity of the missed approach area. Do not depart from procedure unless in VMC.
- Severe turbulence can occur when wind exceeds 30KTS at 2000 within the arc 160°T - 240°T.
- Procedure interacts with Danger Areas EGD701A and EGD701B. Procedure not available when Danger areas are active.
- Use of this RNP procedure is strictly PPR from the aerodrome operator.
- Prior to commencing the procedure, pilots are to broadcast on AFIS 118.080 with flight details and intentions.

CHANGE (10/24): SPECIFICATION CHANGE.

AERO INFO DATE 17 JUL 24

AD 2-EGPR-8-1